



SRAD20

20W ADJUSTABLE STEP-UP

SWITCHING REGULATOR

Adjustable output from V_{IN} to $200V_{OUT}$

Key Features

- Efficiency up to 88%
- Wide input range (5–18V)
- Input under/overvoltage protection
- Output overvoltage protection
- 150kHz constant frequency
- 50W/in³ power density
- Six-sided shielding
- Thermal protection
- External synchronization



Beta Dyne is protected under various patents, including but not limited to U.S. Patent numbers: 5,777,519; 6,188,276; 6,262,901; 6,452,818; 6,473,3171.

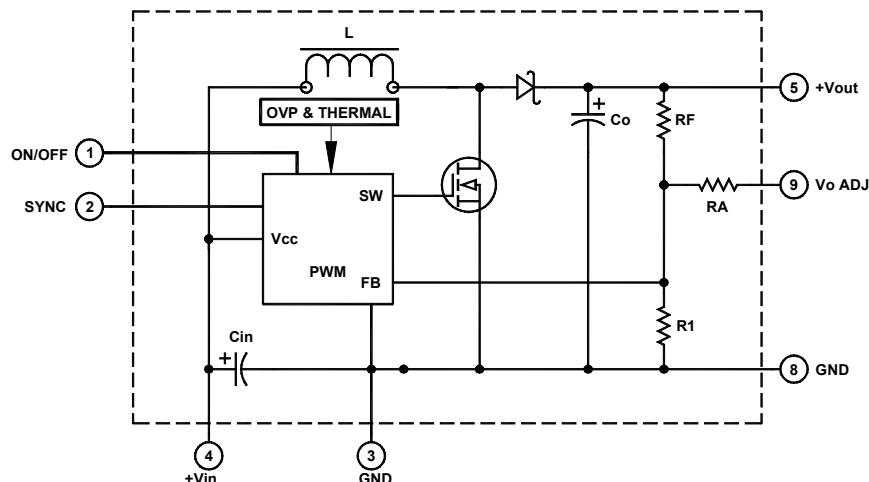
Applications

- Battery Chargers/Backup
- External Modems
- Programmable Power Supply
- xDSL Power Supply
- Telecom Hardware
- LAN and Network Systems
- Point of Sale (POS) Systems

Functional Description

The SRAD20 is a family of 20W constant frequency, current mode step-up switching regulators with excellent line and load regulation that accepts an input voltage from $5V_{IN}$ to $18V_{IN}$ and provides an adjustable output voltage from V_{IN} to $200V_{OUT}$. High switching frequency and SMD technology makes achieving high power density, low cost and high reliability possible. The converters require a low impedance power source or minimum 1000 μ F input capacitor for proper operation. The converters come in a 2 \times 1 \times 0.39-inch package size. NOTE: Please see Application Notes SR-003 and SR-004.

NOTE: These converters DO NOT feature short circuit protection, you must use an external fuse to provide short circuit protection.



Typical Block Diagram

Electrical Specifications

INPUT SPECIFICATIONS

Unless otherwise specified, all parameters are given under typical +25°C with nominal input voltage and under full output load conditions.

PARAMETER	CONDITION / NOTE	MIN	TYP	MAX	UNIT
Input Voltage Range	See Model Selection Guide				
Input Current	NL, See Model Selection Guide				mA
Input Reflected Ripple	With 1000 μ F, See Figure 4		20		mA _{pp}
Turn On Delay	Including Soft Start, See Figure 3		5	8	mS
Overvoltage Lockout, 5V _{IN}		9	10		Vdc
Overvoltage Lockout, 10V _{IN}		18	19		Vdc
Undervoltage Lockout, 5V _{IN}		4	4.5		Vdc
Undervoltage Lockout, 10V _{IN}		8			Vdc
Remote ON/OFF Control, SYNC					
Logic Input Reference	-Input for ON/OFF and SYNC				
Logic Compatibility	TTL Open Collector or CMOS Open Drain				
SYNC Frequency	(See App. Note DC-005)	170	180	200	kHz
Converter ON	Open (Open circuit voltage at Pin 1: 10V Max.)				
Converter OFF ¹	Pin 1 < 0.6V, V _O ADJ \geq 2V				

OUTPUT SPECIFICATIONS

PARAMETER	CONDITION / NOTE	MIN	TYP	MAX	UNIT
Output Voltage	See Model Selection Guide	V _N		200	Vdc
Output Voltage Accuracy			0.5	1	%
Output Current	See Figure 7	100		1000	mA
Line Regulation			\pm 1	\pm 2	% of V _{OUT}
Load Regulation			\pm 1	\pm 2	% of V _{OUT}
Ripple and Noise	See Figure 4		1	2	% of V _{OUTPP}
Temperature Coefficient			0.01	0.02	%
Transient Response	See Figure 1		5		mS
Short Circuit Protection	None, Input Fuse is required				
V _{OUT} Adjust Range	V _O ADJ = 2V to 0V	V _N		200	Vdc
Output Overvoltage Limit		200	210	220	Vdc

GENERAL SPECIFICATIONS

PARAMETER	CONDITION / NOTE	MIN	TYP	MAX	UNIT
Efficiency	See Model Selection Guide				
Switching Frequency	Fixed	150		170	kHz
Isolation	None				
Thermal Resistance			5		°C/W
Thermal Hysteresis			10		°C
Thermal Turn Off Temperature ²	Case Temperature	80	90	95	°C
MTBF	per MIL-HNBK-217F (Ground benign, +25°C)		1.9 \times 10 ⁶		hours

ENVIRONMENTAL SPECIFICATIONS

PARAMETER	CONDITION / NOTE	MIN	TYP	MAX	UNIT
Humidity	Non-condensing			95	%
Storage Temperature		-55		+125	°C
Operating Temperature, Commercial		-40		+70	°C

PHYSICAL CHARACTERISTICS

PARAMETER	CONDITION / NOTE	MIN	TYP	MAX	UNIT
Dimensions (L \times W \times H)	2.00 \times 1.00 \times 0.39 in. (50.80 \times 25.40 \times 9.90mm)				
Weight	1.09 oz. (31g)				
Shielding Connection	-V _N / -V _{OUT} , Pin 3				

¹ The off state output voltage is equal to V_{IN} minus 1 diode drop.

² After thermal turn off, V_{OUT} \cong V_{IN} - 0.7V.

Model Selection Guide

MODEL NUMBER	INPUT				Reflected Ripple ³ (mA _{pp})	OUTPUT		
	Voltage (Vdc)		Current (mA)			Voltage (Vdc)	Current (mA)	Efficiency Full Load (%)
	Nominal	Range	No Load	Full Load				
SRAD20S200/5 ⁴	7	6–10	50	3284	$V_{IN}-200$	100	87	
SRAD20S200/12	12	9–18	40	1894	50	$V_{IN}-200$	100	88

³ Measured with 1000 μ F input capacitor. See C_{IN} in Figure 6.

⁴ For output power of 16W, this model will operate down to 5V_{IN}.

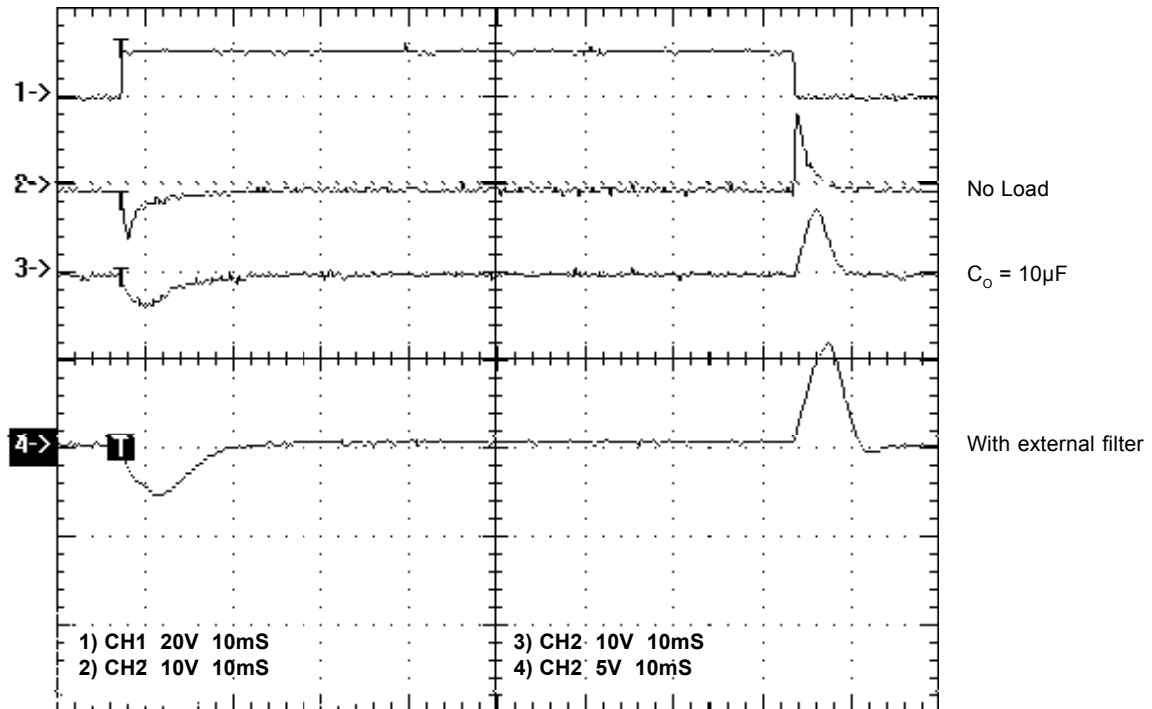


FIGURE 1. Transient response

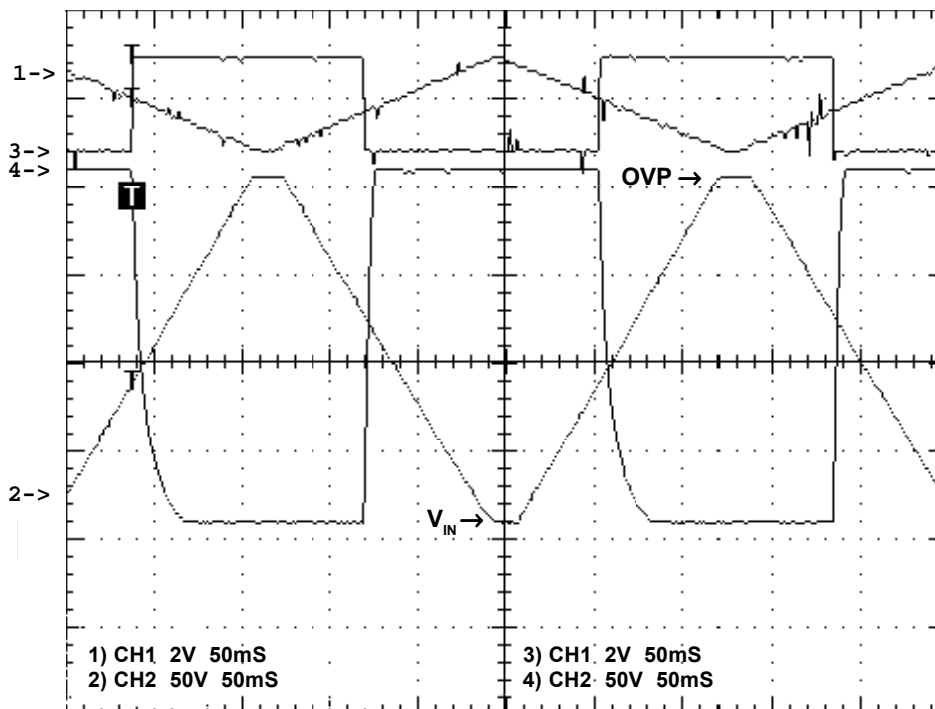
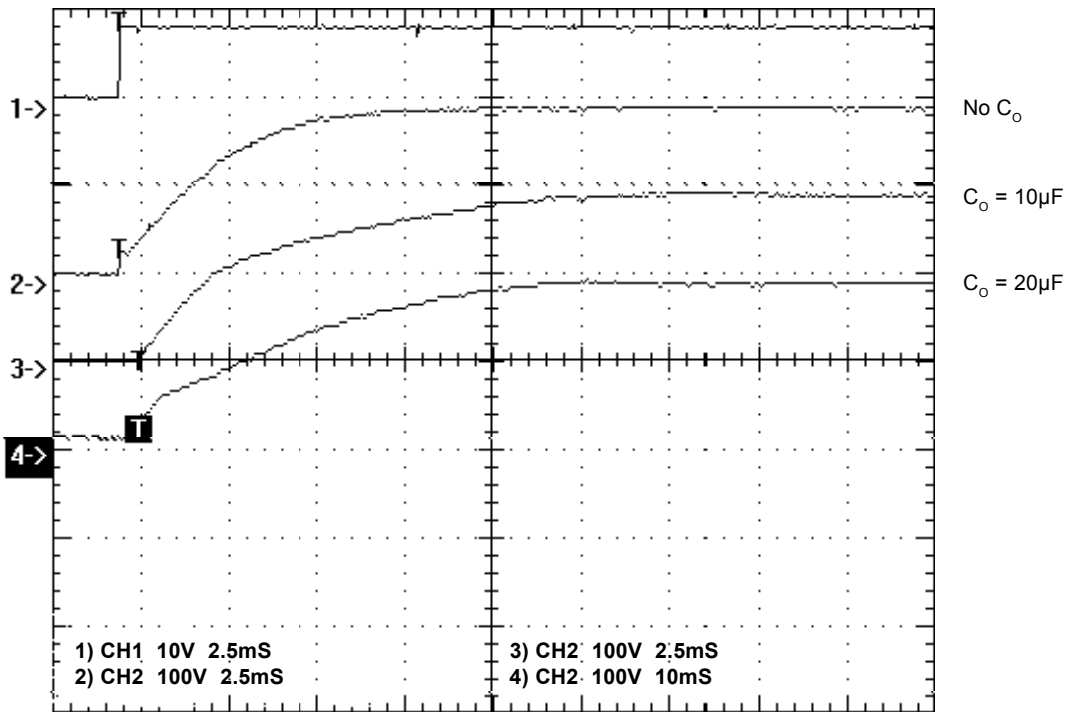


Figure 2 shows the linearity of the converter. The converter can be adjusted from V_{IN} to +200Vdc. Also note the negative-going edge of waveform #4 is the $R_L \cdot C_o$ ($R_L = 2K$, $C_o = 1\mu F$ External + 3 μF Internal) time constant. During this time, the PWM is Off.

FIGURE 2. V_{IN} vs. V_{OUT} Linearity and Output voltage protection



**FIGURE 3. Turn on delay with soft start
(No additional C_o , $C_o = 10\mu F$, $C_o = 20\mu F$)**

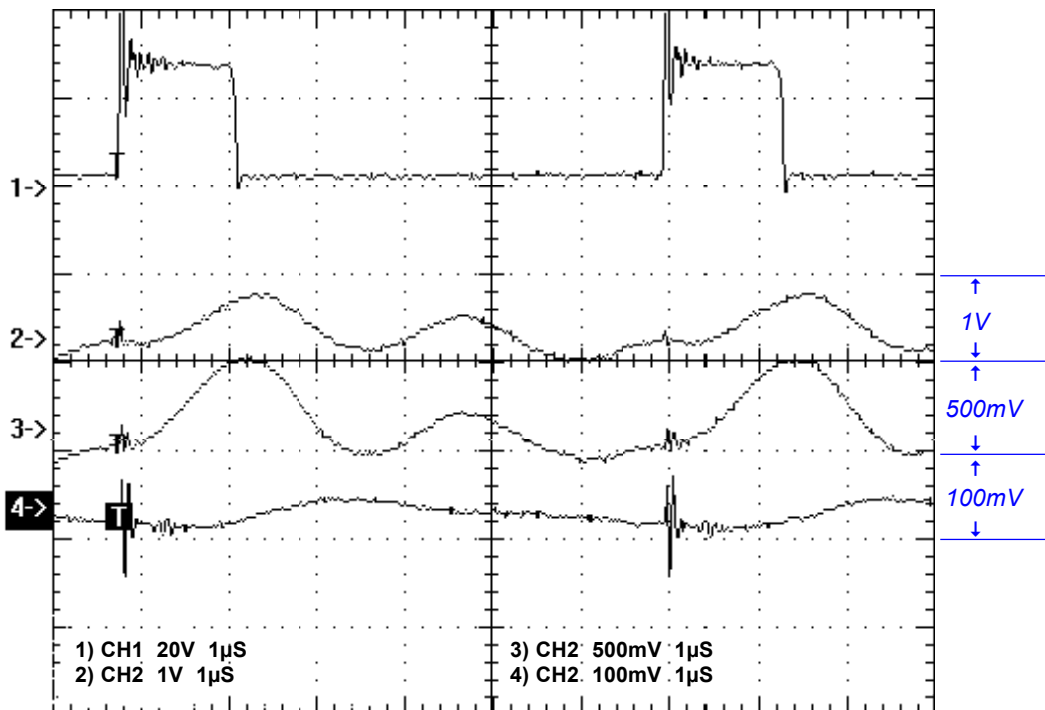


FIGURE 4. Output ripple of SRAD20S200/5

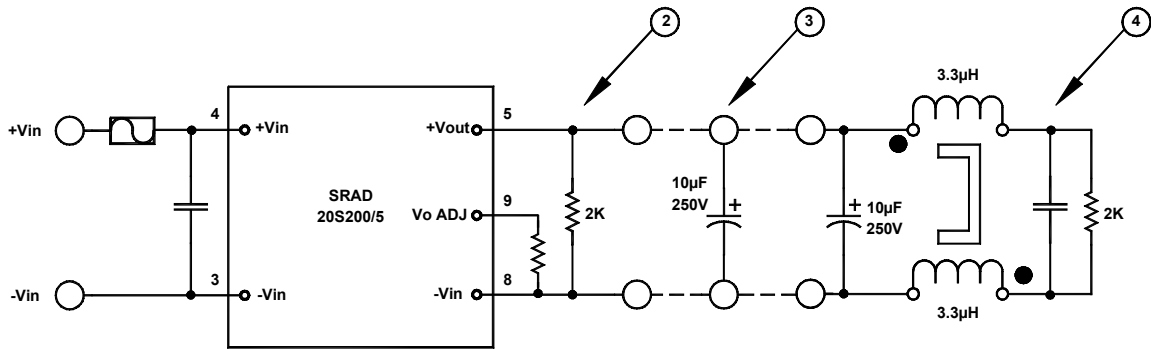


FIGURE 5. Circuit components used to obtain waveform in Figure 4 (See Figure 4)

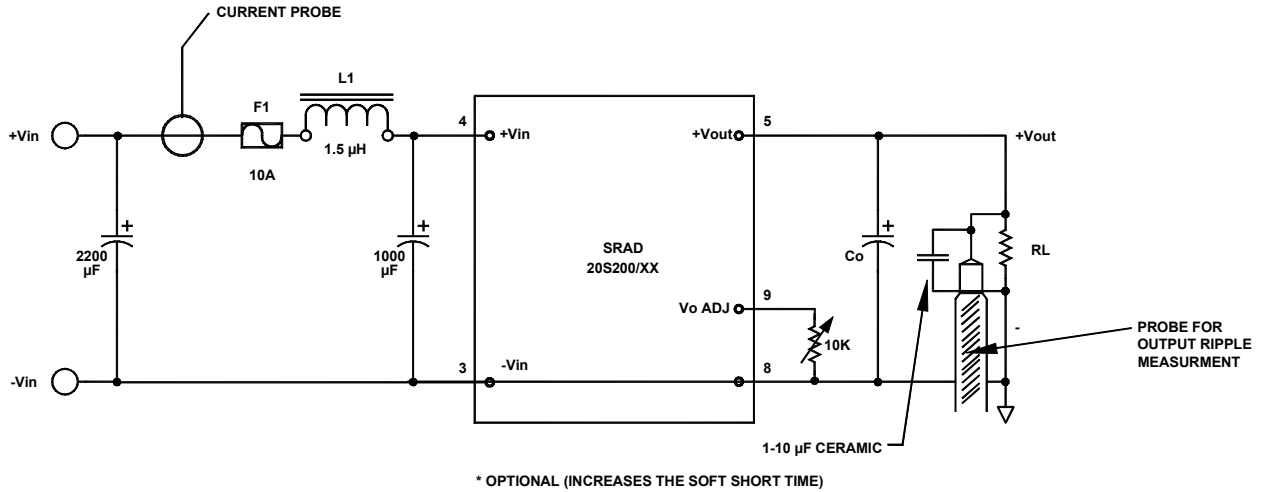


FIGURE 6. Connection diagram for input reflected ripple and output voltage ripple measurements

V _{IN}	F1
5V	8A Slow Blow
12V	4A Slow Blow

Adjusting V_o by R_x in KΩ: $V_o \cong 2 \left(1 + \frac{511}{4.99+R_x} \right)$ $R_x = \frac{511}{(V_o/2) - 1} - 4.99$

Adjusting V_o by an external voltage source: $V_o \cong 206.8 - 102.4 \cdot V_{IN}$ or $V_{IN} = (206.8 - V_o) / 102.4$

V _o	Calculated R _x in KΩ	Nearest STD 1% in KΩ
20	51.78	52.30
40	21.90	22.10
60	12.63	12.70
80	8.11	8.06
100	5.44	5.49
120	3.67	3.65
140	2.42	2.43
160	1.48	1.47
180	0.75	0.75
200	0.172	0.174

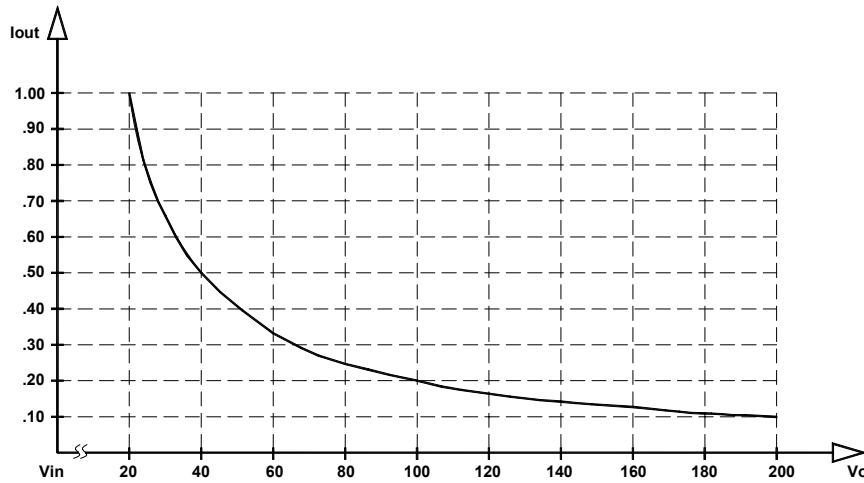
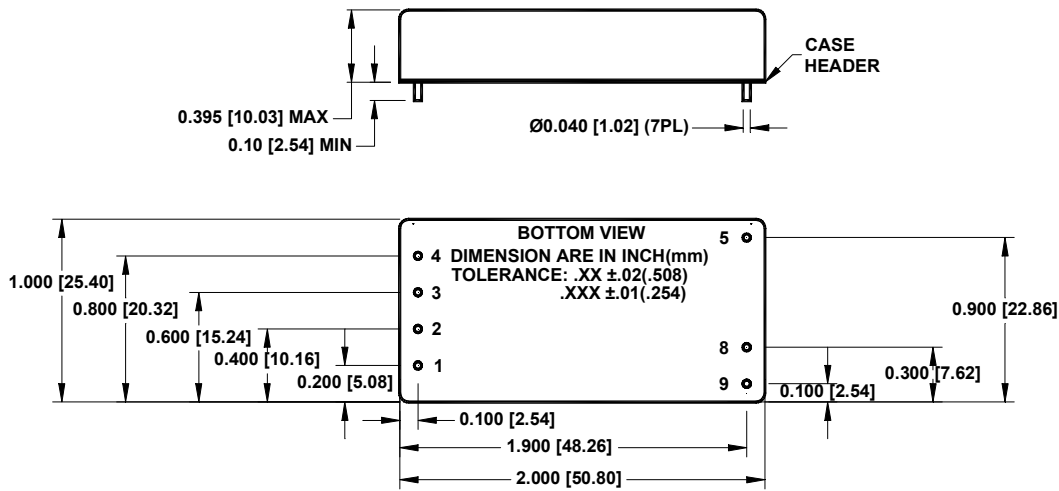


FIGURE 7. I_{OUT} vs. V_{OUT} for P_O Max ≤ 20W

MECHANICAL SPECIFICATIONS



Pin	Function
1	ON/OFF
2	SYNC
3	-V _{IN} (INPUT GND)*
4	+V _{IN}
5	+V _{OUT}
6	No Pin
7	No Pin
8	GND*
9	V _O ADJ

* Input Ground (Pin 3) and Output Ground (Pin 8) are internally connected